

DCx

displaywall controllers

Nexus DCx™ Videowall Controllers

are unprecedented in features, flexibility and price. Our attention to quality ensures uninterrupted operation for your videowall.

Fault-Resilient Design

Some sites just cannot afford unexpected down time. Redundancies in DCx minimises single point failures. Hot-swappable parts let you keep running even when parts are being replaced. nViroGard continuously monitors the videowall environment for possible problems, so measures can be taken before a fault is evident.

Flexible Configuration

Each site is unique. The DCx is offered with a wide range of configurations and options. Pay for what you want, not what others think you may want.

Videowall Management

Your videowall has special needs, and we understand them. Every DCx is bundled with Enabler, our very own videowall management software.

Soft-edge Blending

DCx and projectors with gamma correction, that's all you need! The output from DCx can have overlap for soft-edge blending, or have gaps for flat panels, like LCD or plasma screens.

System Integration

The videowall is just one of the many components in a control room. Proper integration is critical for reliable and efficient control room operations, so DCx is designed to be a team player in your control room.



DCx lite

- Entry level: Pentium PCI motherboard
- Limited fault tolerance
 - Limited expansion and upgrade paths

Suitable for: smaller videowalls with basic input requirements.



DCx PRO

- Workhorse: Pentium PCI backplane
- Redundant and hotswap components
 - numerous expansion

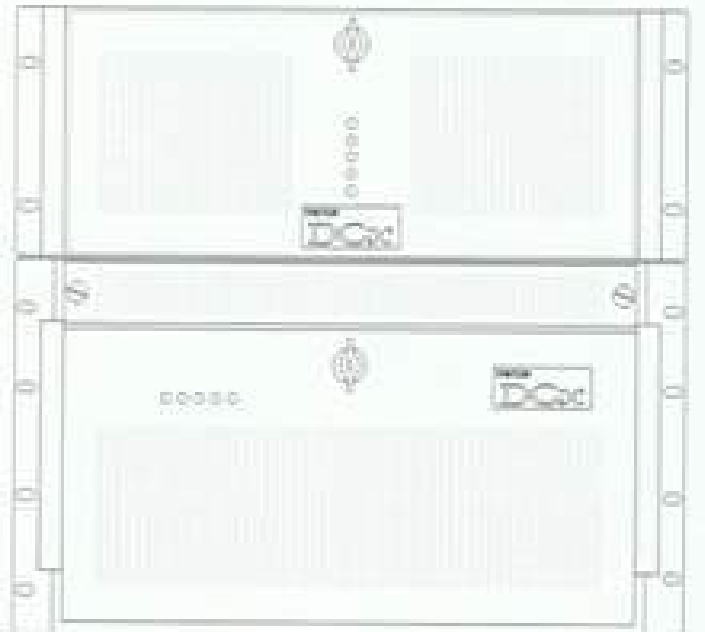
Suitable for: medium-large videowalls at mission critical sites.



DCx INTENSITY

- Serious business: Dual Xeon PCI Express motherboard
- multiple chassis
 - PCI Express and PCI-X expansion backplanes
 - redundant and hotswap components
 - numerous upgrades and extensive expansion
 - system monitoring and warning option

Suitable for: large videowalls at mission critical sites with demanding input sources and heavy processor load



System

Processor	up to Quad Intel Xeon
Bus	up to 20Gb/s switch fabric
Memory	up to 2GB ECC Registered DDR2-400
OS	Microsoft Windows XP Professional Microsoft Windows 2003 Server
Storage	up to 2TB
Ethernet	port aggregated up to 8Gb/s

Output

Ports	up to 64 output channels
Resolution	up to QuadXGA (2048 x 1536)
Interface	VGA, DVI, HDTV
Memory	up to 32MB of 250MHz DDR for frame buffer per channel
Memory	up to 64MB of overlay memory per channel
Pixel Clock	up to 300MHz

Video Input

Processor	up to 10bit ADC with motion adaptive 2D digital comb filter and noise reduction.
Ports	up to 128
Overlays	up to 16 per channel, 128 in total
Display	No size or position restrictions
Resolution	up to 1280 x 1024 per screen overlay
Memory	up to 64MB of overlay memory per channel
Connection	Dedicated cable or Dedicated SMB/s bus
Formats	Composite, S-Video, SDI, RGB, Component, HD

RGB Input

Ports	up to 64
Format	YUV, 422, RGB555, RGB565, RGB888
Data Transfer	up to 4Gb/s DMA with scatter gather
Resolution	up to QuadXGA (2048 x 1536)
Pixel rate	280MHz
Display	no restrictions on size no restrictions on position
Bus	up to 20Gb/s switch fabric
Record/replay	Software based

Chassis

	Height	Width	Depth	Weight	Fans	Door
DCx-ite	4U / 177mm	19" / 483mm	510mm	24kg	2x 108cfm	Thumbtivist keylock
DCx-PRO	6U / 257mm	19" / 483mm	671mm	35kg	4x 51cfm hotswap	Thumbtivist keylock
DCx-Intensity	4U / 177mm	19" / 483mm	671mm	29kg	4x 51cfm hotswap	Thumbtivist keylock
PCI-X Expansion	6U / 257mm	19" / 483mm	671mm	27kg	4x 51cfm hotswap	Thumbtivist keylock
PCI-Express Expansion	4U / 177mm	19" / 483mm	671mm	34kg	4x 51cfm hotswap	Thumbtivist keylock

RAID Options

- SATA, PATA or SCSI disks
- RAID 0, 1 or 5 configuration
- All options with Hotswap bays
- All options with Auto-rebuild
- Hotspare disk available
- Hardware controller for zero CPU overhead

Accessories

- Sliding rails
- nVivoGuard monitoring system with SMS alert
- 1U tray with foldable LCD monitor and keyboard/trackball
- TV Tuner
- Video switches
- Streaming Video/RGB



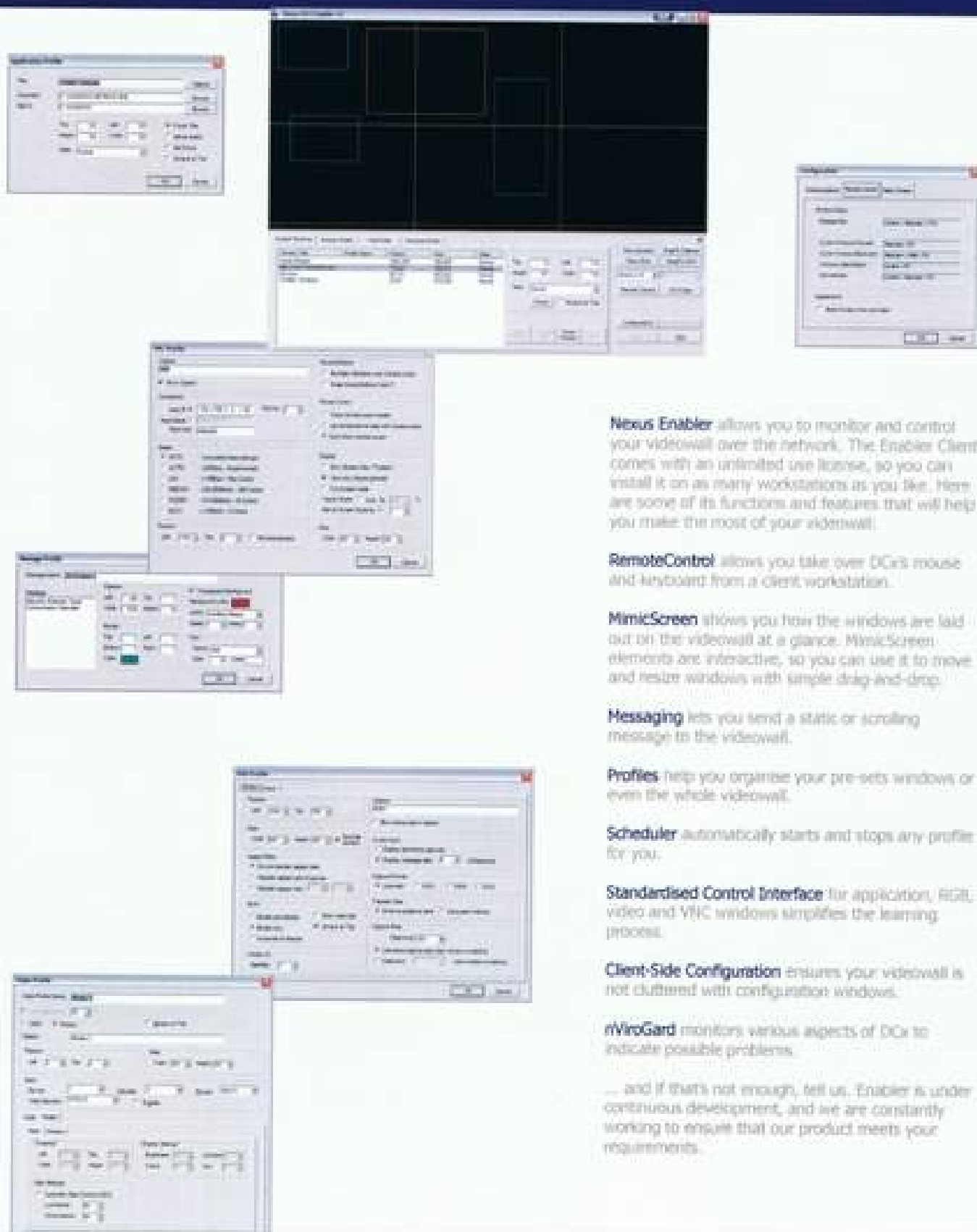
Authorized distributor

DCx
digital controller
a product of

Microsoft
CERTIFIED

Partner

A videowall controller is not, and should not be, just another high-end computer. It should be a specialised computer with the necessary tools required to meet the unique requirements of a control room. Each DCx comes with the Enabler Videowall Management Software to help you manage your videowall.



News Enabler allows you to monitor and control your videowall over the network. The Enabler Client comes with an unlimited use license, so you can install it on as many workstations as you like. Here are some of its functions and features that will help you make the most of your videowall.

RemoteControl allows you take over DCx's mouse and keyboard from a client workstation.

MimicScreen shows you how the windows are laid out on the videowall at a glance. MimicScreen elements are interactive, so you can use it to move and resize windows with simple drag-and-drop.

Messaging lets you send a static or scrolling message to the videowall.

Profiles help you organise your pre-sets windows or even the whole videowall.

Scheduler automatically starts and stops any profile for you.

Standardised Control Interface for application, HTML, video and VNC windows simplifies the learning process.

Client-Side Configuration ensures your videowall is not cluttered with configuration windows.

nViroGard monitors various aspects of DCx to indicate possible problems.

... and if that's not enough, tell us. Enabler is under continuous development, and we are constantly working to ensure that our product meets your requirements.